



# P&SKA NEWSLETTER



Portsmouth & Southsea Kennel Association Keeping You In Touch....  
January 2009

Publisher: Mrs. D Hobbs  
pandska@hotmail.co.uk

Issue No 4  
www.pandskaclub.com

**News...** There was an announcement in the dog press on 23<sup>rd</sup> January 2009 regarding the clubs Open Show, which was to be held at Havant Leisure Centre on the 8<sup>th</sup> February 2009. Unfortunately due to circumstances beyond our control our Open Show has been cancelled. We look forward to seeing you all on the 4<sup>th</sup> October 2009 at our next show. You will be able to enter this show on-line, via [www.fossadata.co.uk](http://www.fossadata.co.uk)  
All entry fees will be returned in due course.

## **Points of View: By Pam Byrne** **What It Means To Be A Committee Member Of P&SKA** **Preparing for a show**

This is an all year job firstly liaising with the Kennel Club as to the dates of your show, this has to be done by August 2009 for the dates required for 2011. So you can see how far in advance you have to start planning, you also have to name any societies. You don't want to clash with as well as other venues. This means any other society or venue that would stop you from getting a good entry of 4 per class if you lose your 4 you will lose that show the following year and until you get 2 consecutive shows at 4 per class you do not get your 2<sup>nd</sup>. Show back. Next you have to make sure that your venue is available for the date you need and book that at least a year in advance. To get a show ready you have to decide what breeds you will have in each of the 7 groups then you have to get Judges who are suitably qualified with the required Kennel Club qualification for what they have been asked to judge. Once this is done you then have to lay the show out in the format you all see in the schedule. The next job is to get it to you printers and make sure you have it back with plenty of time to get them out before the closing date. Then you wait for the entry forms and money start arriving which have to be sorted and prepared for the catalogue which again have to go to the printer in plenty of time so they come back to you before the show. The day of the show can be fraught with many complaints, but it can also go very smoothly. There are also many rules that have to be adhered to on the day of the show, which if you get a Kennel Club field officer arrive before the start of the show, he has the power to close the show on the day. After the show there are catalogues to be marked up and a report to be written to the Kennel Club about any incidents on the day and mistakes in the catalogue. Also left over rosettes to be counted and put away ready for the next show, then hey ho were off again getting ready for the next show. While all this is going on there are committee meetings to arrange ringcraft to sort out, as well as setting up the show and ringcraft each week and of course not forgetting all the clearing up that has to be done. This is just to get one show on the road. Would you like to have a go?

## **Christmas Match Night...**



Congratulations to Chris Petty who won dog of the year 2009 with her Am Cocker Spaniel.

Reserve went to Sharon Igglesden with her Cesky Terrier. Shelby Arbon won Junior Handler.

Best Improver was awarded to Rosie Beamister.

Well done to you all.. Thanks to your generosity we raised £100 for the Elizabeth Foundation, Alison Robinson who represented the charity joined us on the evening and gratefully accepted our donation.

Thanks Also to our Judges...  
Mr Peter Dolamore (Best In Match)  
Mrs Kay Stoner (Novelty Classes)

**March 18<sup>th</sup> 2009**  
**Ringcraft 7.30-8.30pm**  
**A.G.M. 8.45pm**  
**All Members Please**



## **My Breed: The Tibetan Terrier – The Little People!**



*Trinnie and Kassie, Kylamor Tibetan Terriers*  
(Photo) The history of the Tibetan Terrier is uncertain due to the territory of its origin. These dogs were bred in the Lamaist monasteries located in the remote sections of the Himalayas nearly 2000 years ago. It is the result of thousands of years of natural adaptation to the harsh Tibetan climate. In fact, this breed is not a terrier, but was only named that because of the similar size. Unlike many breeds,

the Tibetan terrier was kept as a companion, not a worker, although it did occasionally help out with chores such as herding. They were known as "luck bringers" or "holy dogs." Legend states that if an earthquake destroys the major access route into the "Lost Valley", visitors, were given a TT for their return trip as they have a very high level of intelligence and directional awareness. No one ever sold their good luck, afraid of tempting fate, however sometimes the dogs were presented as a gift of gratitude. In 1920, Dr. A. Grieg, an Indian physician, was given a good luck dog as thanks for medical treatment. She was very interested in the breed and went about obtaining additional dogs for breeding and promoting them. It slowly became recognized first in India, then England, and finally in America in the 1950s.

So what about living with today's TT? Well it is said that you never own a TT, but they own you and your home and anything that they want and if you are lucky, they will share it with you. We have lived with TTs since 1991 and they are the most adorable companion that you could wish for. They are amusing, intelligent and very loyal, however, there is a downside and that they are thieves. They will steal anything that belongs to any member of the family, disappear into their bed and promptly chew it. They are also excellent climbers and when not lying on top of the sofa, they will climb trees and the occasional mountain. They are very sociable animals and do not fair well on their own, we fostered one for ten days on its own and it managed to destroy an entire kitchen door in the space of a couple of hours so if they are to be left, they should have a companion. The commitment to a TT is not one that should be taken lightly as they usually live to 17, even 20 years. They mature at a very late age and will test you as puppy hood lasts a long time, some never grow up.

The TT has been made famous by the children's program "Come Outside" which featured Pippin the faithful companion to Auntie Mabel.



**Crufts 2007** saw a TT win Best in Show, he was none other than Champion Araki Fabulous Willy bred by Ken Sinclair and Neil Smith. Willy was the TT CC record holder dog with 44 cc's, 16 groups, 4 Best in shows, 4 reserve Best in shows at champ shows. I have had the good fortune to see Willy in the show ring where he literally took your breath away and in a home environment where he was the usual cheeky and playful dog. Sadly, in December 2008, Willy died aged 7 years after a short illness and will be sadly missed by all who knew him.

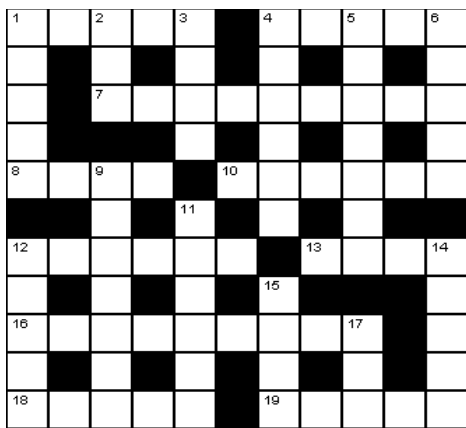
**Written Jan 09 By: Club Member, Paul Revell.**

## **On-line.....**

**You** can now join the clubs website as a member and upload your own profile and photograph promote your own affix and breed simply visit: [www.pandskaclub.com](http://www.pandskaclub.com) just click on the link and register on the main page. If you visit please leave us your comments on the guest book page. You can also chat to other club members there...

**Or** new for 2009 [www.facebook.com](http://www.facebook.com) chat live and upload photographs on our new facebook page just search for us as Portsmouth & Southsea Kennel Association..

**Quick Crossword. Answers Below**



- Across
- Twelve (5)
  - Hoard (5)
  - Unaware (9)
  - Gape (4)
  - Wore away (6)
  - Birds of prey (6)
  - Notion (4)
  - Large spider (9)
  - The lowest point of anything (5)
  - Implied (5)

- Down
- Journal (5)
  - Menagerie (3)
  - World's longest river (4)
  - Secret or hidden (6)
  - Bustling (7)
  - Abated (5)
  - Placed a bet (7)
  - Thinner (6)
  - Consumed (5)
  - Proficient (5)
  - Female relative (4)
  - Part of a circle (3)



**Bacon Bites**

- 3 cups whole wheat flour
- 1/2 cup milk
- 1 egg
- 1/4 cup bacon fat (or vegetable oil)
- 1 tsp. garlic powder

3 - 4 slices bacon, crumbled up.  
1/2 cup cold water  
Mix ingredients together thoroughly. Roll out on a floured surface to 1/2 - 1/4" thickness. Bake for 35-40 minutes in a 325 degree oven.



**How to Train Show Dogs Alert Expressions for the Dog Show.**

- Step 1:** Reward your dog for paying attention. A dog that is distracted by the presence of other dogs, other people and strange sounds is not likely to show expression in the required manner for show presentation. Begin by giving the dog a small treat every time he or she looks at you. The dog will learn to watch you with anticipation and ignore distractions.
- Step 2:** Vary the reward schedule once your dog knows that watching you will result in treats. Intermittent reward produces the strongest display of the desired behaviour, and in this case heightens the dog's alertness.
- Step 3:** Move your dog into a standing position and tell him or her to wait. Show the treat then put it back in your pocket. Show the treat and pretend you are taking a bite. Then let the dog have the treat. This is called "baiting" and will heighten the dog's anticipation and produce an alert expression.
- Tip:** Use a soft strong smelling treat like liver.

**SHOW TIPS.** Wash and groom the dog the day before the show to prevent any last minute stress and possible delays. Trim nails, clean teeth, and ensure that the dog is looking in tiptop shape prior to the event.

**Always Clean Up After Your Dog, Whether It Is At Training Or At A Show. Be A Responsible Owner Don't Give Us All A Bad Name....**



**Do you have any news....** Just been to your first show and been placed, we want to know about it... whatever your news, email me at the address at the foot of the page. I am also looking for photographs of members and their dogs, in action for an advertisement for the club. Do you have any suitable copyright free photo's please email them to me ASAP. I am also looking for someone to write the next 'My Breed' article, if you are interested in writing between 150-200 words about your dog then please contact me. Our next newsletter will be out on the 29<sup>th</sup> April 2009. You can now read our newsletter on-line! Looking forward to hearing from you soon. [www.pandskaclub.com](http://www.pandskaclub.com)  
e-mail: [pandska@hotmail.co.uk](mailto:pandska@hotmail.co.uk) (Dawn Hobbs)

**Did You Know?**

Dogs have 42 teeth. Six pairs of sharp incisor teeth are in front of the mouth, flanked by two pairs of large canine ("dog") teeth. The other teeth are premolars and molars. The incisors and the canines are very important because the dog bites and tears at its food with these teeth.

**Match nights**

The monthly match nights at your training club will be an important part of familiarising your dog with what is expected of him at those first shows.

**What to do When**

**Training for a Show?**

You can introduce ring training into your dog's every day activities. Whilst out walking, hold your lead as you would in the ring. Break into a pace suitable for showing your chosen breed of dog. Practice stopping and standing. Ask fellow dog walkers to 'go over' your dog. Get him used to strangers looking at his gums and teeth.

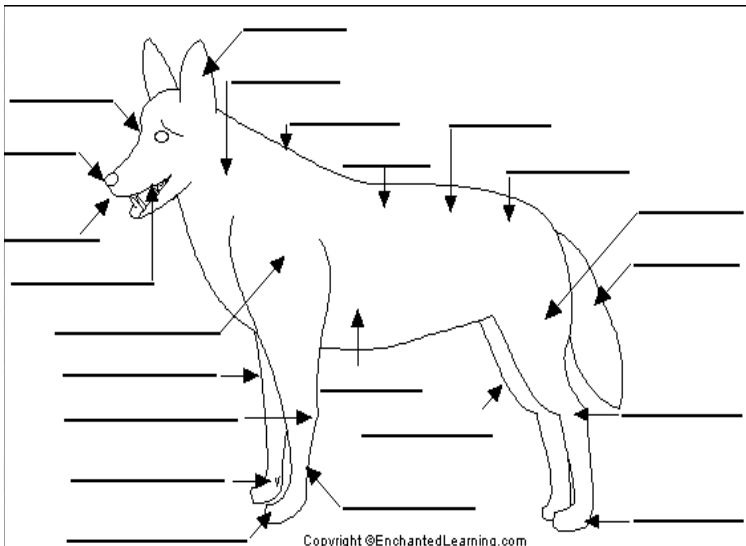
If you are in an open space practice moving your dog as if he is in the show ring. Moving in a triangle shape and up and back in a straight line will get him used to what is expected of him in the ring. Most importantly get your dog used to moving on a loose lead rather than having the lead wrapped around your hand six times pulling the dog to your leg - this is because you are unsure of your own dog - practice will ensure you work as a team.

**RINGCRAFT...**

The Committee are arranging for guest trainers to teach ringcraft.

Thanks to Mrs Jo Cobb who took the

last week. Sharon Igglesden will be taking the class on Feb 18<sup>th</sup> 2009 7.45pm Start. We shall be having other guests throughout the year.



Copyright © Enchanted Learning.com

**Can You Label The Dog Without Cheating...**

- Back** - the part of the body between the loin and the withers.
- Brisket** - the chest of the dog.
- Carpals** - the wrist, the bones of the pastern joint.
- Dewclaw** - the tiny, useless, fifth claw - located on the inner part of the leg above the other toes.
- Ear** - the fleshy, often triangular appendages on the head associated with hearing.
- Flews** - the hanging part of the dog's upper lips.
- Forearms** - The parts of the forelegs between the elbow and the pastern.
- Forefoot** - the front feet.
- Hind foot** - the back feet.
- Hips** - the joints at the uppermost part of the hind legs.
- Hock** - the bones that form the ankle/heel of the dog.
- Loin** - the parts of the body located on both sides of the backbone between the ribs and the hips.
- Muzzle** - the front parts of the jaws.
- Nose** - the tip of the muzzle.
- Pastern** - the part of the leg below the knee of the front leg or below the hock of the hind leg.
- Ruff** - the long, thick hair that grows around the neck.
- Shoulder** - the joint at the uppermost part of the forelegs.
- Stifle** - the dog's knee, located on the hind leg above the ankle.
- Stop** - the indented part of the skull between the eyes.
- Tail** - the hind-most part of the backbone, set on the rump.
- Thigh** - the upper part of the hind leg.
- Withers** - the top of the shoulders, just behind the neck.

Answers at the bottom of the page....

